

Cut energy costs with a new load profiling tool.

Control energy costs with a new, analytical tool for commercial and industrial customers.

Introducing

Give the smart grid some real smarts, your own.

Now you have a window into your building's energy consumption as well as the analytical tools to compare historical and current usage in the same graph. "Load Profiling" is much more than data. It is actionable information for managing operations to reduce energy costs. It is a powerful tool for identifying energy-saving opportunities.

The benefits of this new tool are many and significant for commercial and industrial customers. When you apply your own human intellect to profiling data, a light bulb goes on in the smart grid. Please review the program highlights and contact us for a demonstration or to initiate service for your organization or enterprise.



Compare historical data, department to department, shift to shift.

A new tool for energy efficiency from

Empower your organization to control energy costs.

Every day offers an opportunity to cut your power bill with automated, cross-referenced, energy-use data and analysis.

Historical data comparison

• Measure Performance

Use the historical analysis tool to compare current rates of consumption against previous time periods. This will give you a quick and easy snapshot in 15 minutes intervals of how your facility is performing after making efficiency upgrades, behavioral changes, or to simply measure variable impacts such as weather patterns.

Rate-smart, customizable software tools make sophisticated analysis a no-brainer.

Get the back-up to brag a little.

Once armed with actionable energy-profiling information to implement structural or behavioral changes within your workplace, you'll want to leverage the efficiencies gained to generate additional benefits.

• Energy-savings documentation

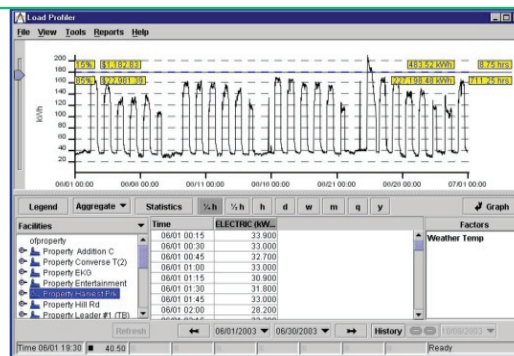
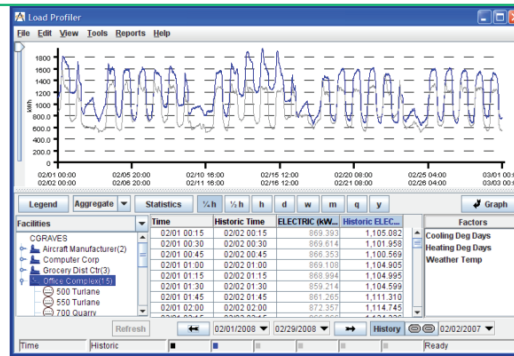
The ability to document your energy savings can contribute to your green initiatives including:

- Carbon footprint calculation
- Qualifying for LEED Certification
- Demand-side management (DSM)
- Performance analysis

The Daily Update

• Manage Demand

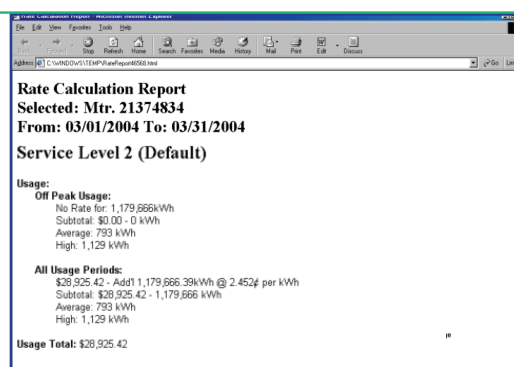
The daily update, slider bar, and on-point data analysis allow you to quickly pinpoint when peak demands occurred and associate costs with the increases. This will assist you in the decision-making process of demand-side management.



Rate Calculation Report

• Mitigate Rate Increases

This tool is the only one of its kind that uses a comprehensive rate editor that allows you to identify opportunities to reduce energy costs. You will be able to see the future impacts of changing rates, giving you the chance to be proactive in dealing with rising energy costs.



Powered by
Automated Energy, Inc, a leading provider of web-based energy information services.



• Verifiably "green."

With detailed statistics to support energy savings results, you can substantiate your sustainability and environmental leadership within your community and industry. Include the program and its results on your website and in your newsletters. Announce your results in the press to verify your commitment to energy efficiency and to inspire other organizations to follow your example.

Learn more at:

Contact us today to get started: